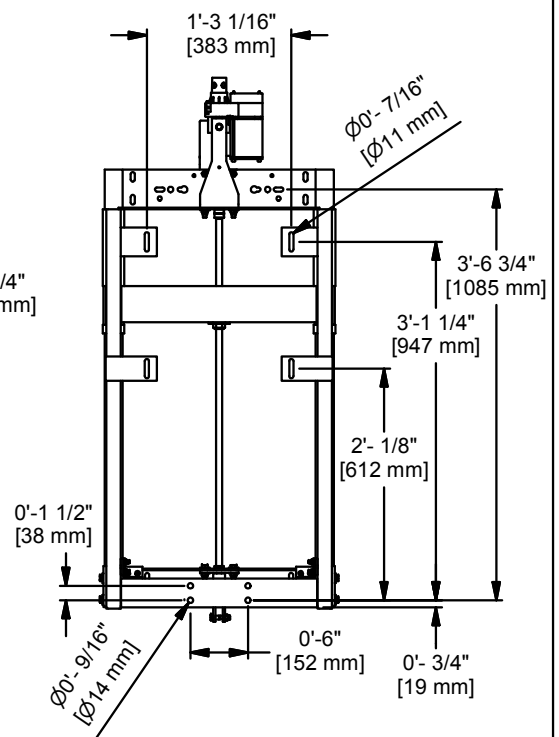
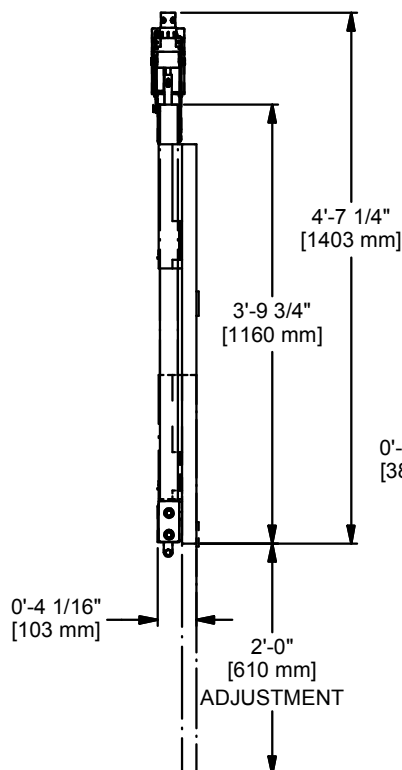


STATIONARY MOUNTING SIDE



BOARD MOUNTING SIDE



Gared Holdings, LLC
9200 E. 146th St. Noblesville, IN 46060

THIS DOCUMENT CONTAINS TRADE SECRET AND OTHER MATERIALS WHICH ARE PROTECTED BY CONFIDENTIALITY NOTICE AND AGREEMENT AND BY COPYRIGHT. ANY USE OR COPYING OF THIS DOCUMENT EXCEPT AS AUTHORIZED BY GARED HOLDINGS, LLC IS STRICTLY PROHIBITED.

ELEC HEIGHT ADJUSTER, 115V 60HZ 1PH

DRAWN	CROSBY	DATE	12/21/2017	DATE ISSUED
APPROVED		DATE		

FILE LOC. Q:\Inventor Files\Specification Files\09_Accessories

SIZE	SCALE	SHT. NO.	PART NO.	REV
A		1 OF 3	1171	H

H	WDC	04-09-20
G	JCC	12-21-17
REV	BY	DATE



MODEL 1171

ELECTRIC HEIGHT ADJUSTER ADJUST-A-GOAL SERIES

APPLICATION

This unit is designed to electrically adjust goal height from 8' to 10'. This unit is operated with your choice hard wire kit or power wand kit and power wand. (One power wand may be used to operate several electric adjust-a-goals.) This unit may be installed on any PSS and/or Gared basketball units as well as many other manufacturers.

MATERIAL

Vertical tubing shall allow the slide tubing to move freely without binding. Horizontal structure are two 2" x 4" x 3/16" thick steel L braces, one at each end. A 1 1/2" x 3" x 3/16" thick steel tube is used as a direct goal attachment to transfer loads from backboard to the surrounding framework. All components are welded to ensure stability during normal play. Height indicator label located on the side of the unit shall be used to visually determine height settings from 8' to 10' in 3" increments. Actuator shall hold the goal and board at desired height position.

ELECTRICAL

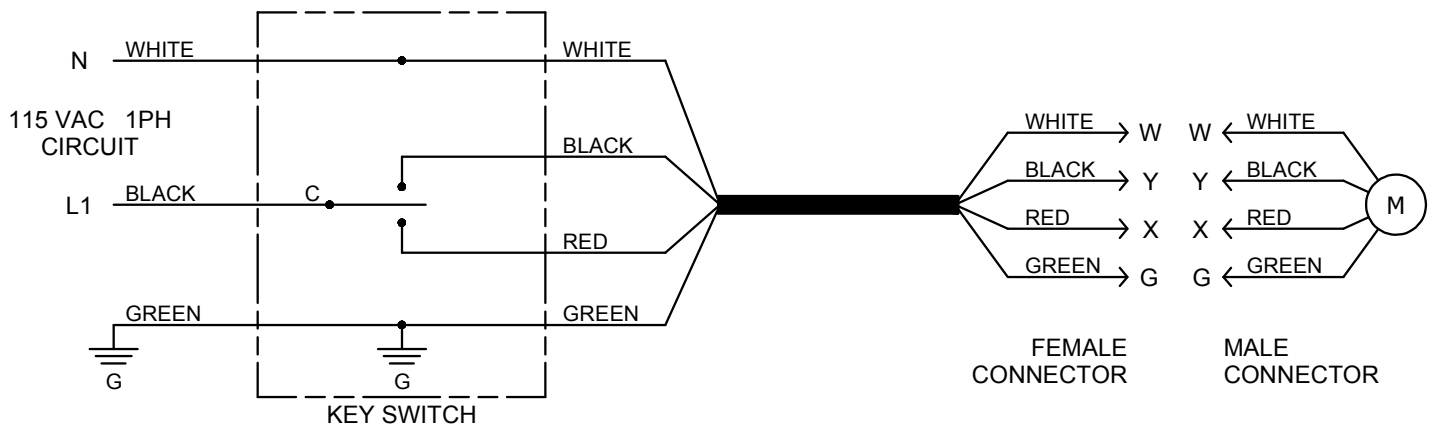
1.3 amp, 115vac, single phase, gear-motor actuator shall provide smooth, reversible linear motion for loads up to 600 lbs. and travel 24". Actuator to have 25% duty cycle and factory set cam style limit switches. Gear-motor shall be ETL listed.

Unit shall be furnished with standard flat black finish and should not be painted after shipment. Unit must be periodically lubricated to insure proper function and ease of height adjustment.

ACCESSORIES

1158	HARDWIRE KIT, AAG KEY SWITCH
1157	HARDWIRE KIT, FOR POWER WAND
1159	POWER WAND, FOR AAG
1156	REMOTE CONTROL KIT, FOR AAG
9120-11-08	ADJ-A-GOAL CRANK & EXT ROD WHITE (for manual operation)

Subject to design change and current manufacturing practices.



ELECTRICAL REQUIREMENTS

MINIMUM CIRCUIT REQUIREMENTS
 -DEDICATED 115VAC, 1PH, 60HZ,
 15 AMP SERVICE

MOTOR SPECIFICATION
 -1/8HP 115VAC, 1PH, 60HZ, 1.3 FLA
 -INSTANT REVERSING
 -AUTO RESET THERMAL O/L

MINIMUM WIRE SIZE
 (copper wire, 3% max voltage drop)
 0-430 ft.....14 ga.
 430-690 ft.....12 ga.



Gared Holdings, LLC
 9200 E. 146th St. Noblesville, IN 46060

THIS DOCUMENT CONTAINS TRADE SECRET AND OTHER MATERIALS WHICH ARE PROTECTED BY CONFIDENTIALITY NOTICE AND AGREEMENT AND BY COPYRIGHT. ANY USE OR COPYING OF THIS DOCUMENT EXCEPT AS AUTHORIZED BY GARED HOLDINGS, LLC IS STRICTLY PROHIBITED.

WIRING SCHM, 1171 115V 1PH 60HZ

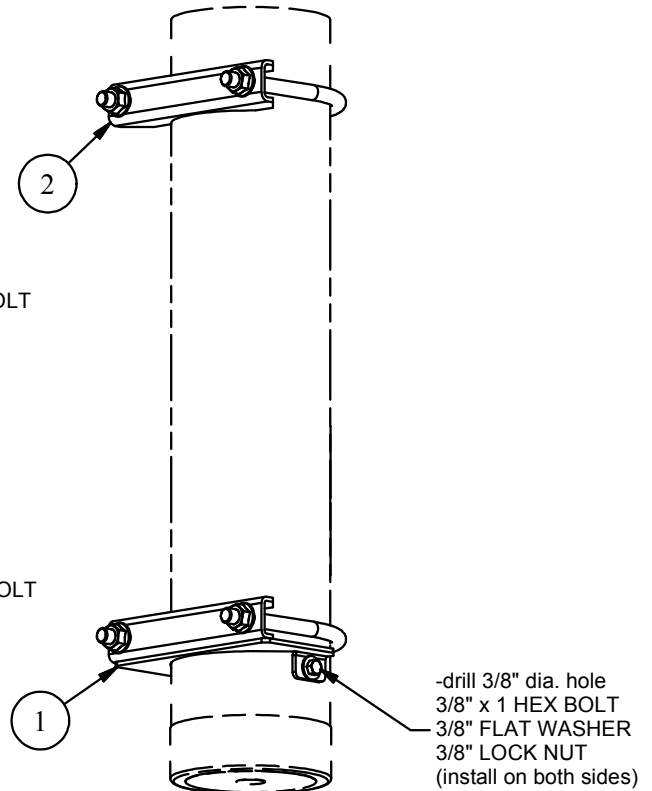
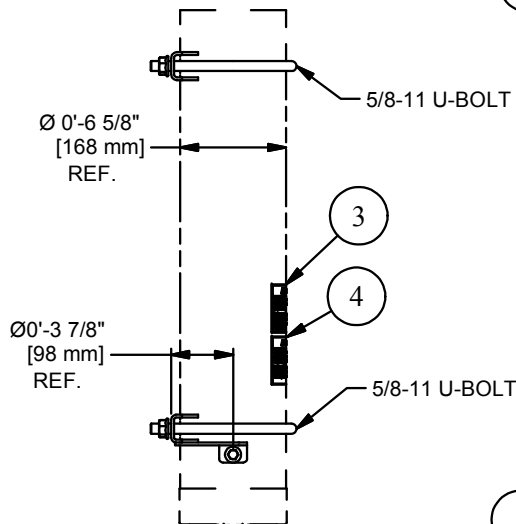
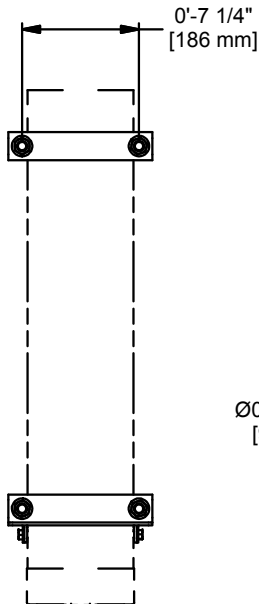
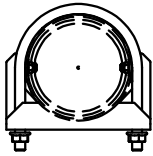
DRAWN	CROSBY	DATE	12/21/2017	DATE ISSUED
APPROVED		DATE		
FILE LOC. Q:\Inventor Files\Specification Files\09_Accessories				
SIZE	SCALE	SHT. NO.	PART NO.	REV
A		3 OF 3	1171	H

H	WDC	04-09-20
G	JCC	12-21-17
REV	BY	DATE

ITEM	QTY	PART NUMBER	DESCRIPTION
1	1	503951385	CLAMP ASSY, AAG MOUNT, 6 5/8" ANTI-ROTA
2	1	503854344	BANK MOUNTING CLAMP, 6 5/8" ASSY
3	1	123951581	WARNING LABEL - MAST U-BOLT TORQUE
4	1	123951584	WARNING LABEL - STOP BOLT AR

INSTALLATION INSTRUCTIONS

1. After board and goal have been adjusted for plumb, level, and the proper height A.F.F., make sure all 5/8" clamp U-bolts have been torqued to 94 to 130 ft-lbs.
2. Using a 3/8" dia. bit, drill through the mast tube at the 3/8" hole on each side of the lower mast clamp.
3. Install a 3/8" x 1 hex bolt on each side of mast clamp using a 3/8" flat washer under bolt head and lock nut.
4. Apply warning labels to back side of post as shown.



FINISHED WEIGHT N/A

⚠ WARNING

The 5/8" mast clamp U-bolt nuts **MUST** be torqued to a value of 94 to 130 Ft-Lbs. [128 to 176 Nm].

Failure to torque the U-bolt nuts to the specified value could allow the backboard to slip off the mast resulting in serious injury or death.

123951581

⚠ WARNING

Stop Bolts **MUST** be installed on each side of the mast clamp after final adjustment. See installation instructions.

Failure to install these bolts could allow the backboard to slip off the mast resulting in serious injury or death.

123951584



Gared Holdings, LLC
9200 E. 146th St. Noblesville, IN 46060

THIS DOCUMENT CONTAINS TRADE SECRET AND OTHER MATERIALS WHICH ARE PROTECTED BY CONFIDENTIALITY NOTICE AND AGREEMENT AND BY COPYRIGHT. ANY USE OR COPYING OF THIS DOCUMENT EXCEPT AS AUTHORIZED BY GARED HOLDINGS, LLC IS STRICTLY PROHIBITED.

MTG. KIT, AAG TO 6-5/8" DIA. MAST

DRAWN	CONNERLEY	DATE	3/10/2010	DATE ISSUED
APPROVED	CONNERLEY	DATE	3/10/2010	

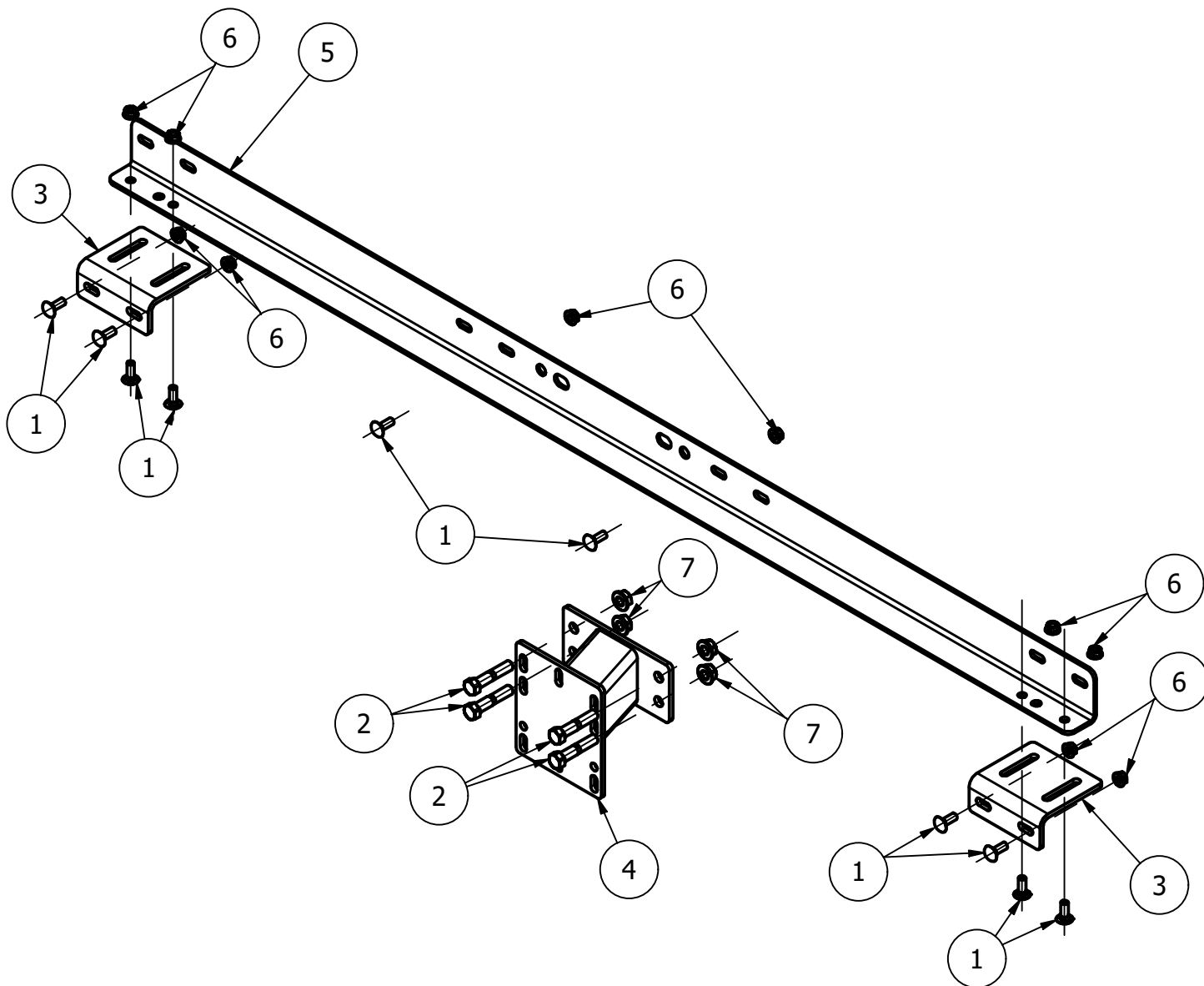
FILE LOC. Q:\Inventor Files\0000-9999

SIZE	SCALE	SHT. NO.	PART NO.	REV
A	NONE	1 OF 1	1408	B

B	WDC	01-30-20
A	WDC	03-17-17
REV	BY	DATE

PARTS LIST

ITEM	QTY	PART NUMBER	DESCRIPTION
1	10	501-6-16-16	BOLT, CARRIAGE 3/8-16 UNC X 1
2	4	502-8-13-40	HEX BOLT, 1/2-13 UNC X 2.5
3	2	503852349	BRACKET, ADJUSTABLE BOARD MOUNT
4	1	503853946	WELDMENT, DIRECT MOUNT EXTENSION
5	1	504151666	SUPPORT ANGLE, WM 63" CENTER
6	10	548-6-16	HEX NUT, SERRATED FLANGE 3/8-16
7	4	548-8-13	HEX NUT, SERRATED FLANGE 1/2-13



Gared Performance Sports Systems
9200 East 146th Street, Suite A
Noblesville, IN 46060

THIS DOCUMENT CONTAINS TRADE SECRET AND OTHER MATERIALS WHICH ARE PROTECTED BY CONFIDENTIALITY NOTICE AND AGREEMENT AND BY COPYRIGHT. ANY USE OR COPYING OF THIS DOCUMENT EXCEPT AS AUTHORIZED BY GARED PERFORMANCE SPORTS SYSTEMS IS STRICTLY PROHIBITED.

MTG. KIT, 63" X 36" REC BOARD TO AAG

DRAWN CONNERLEY	DATE 3/10/2010	DATE ISSUED
APPROVED CONNERLEY	DATE 3/10/2010	
SIZE A	SCALE	SHT. NO. 1 OF 1
PART NO. 4404	REV C	